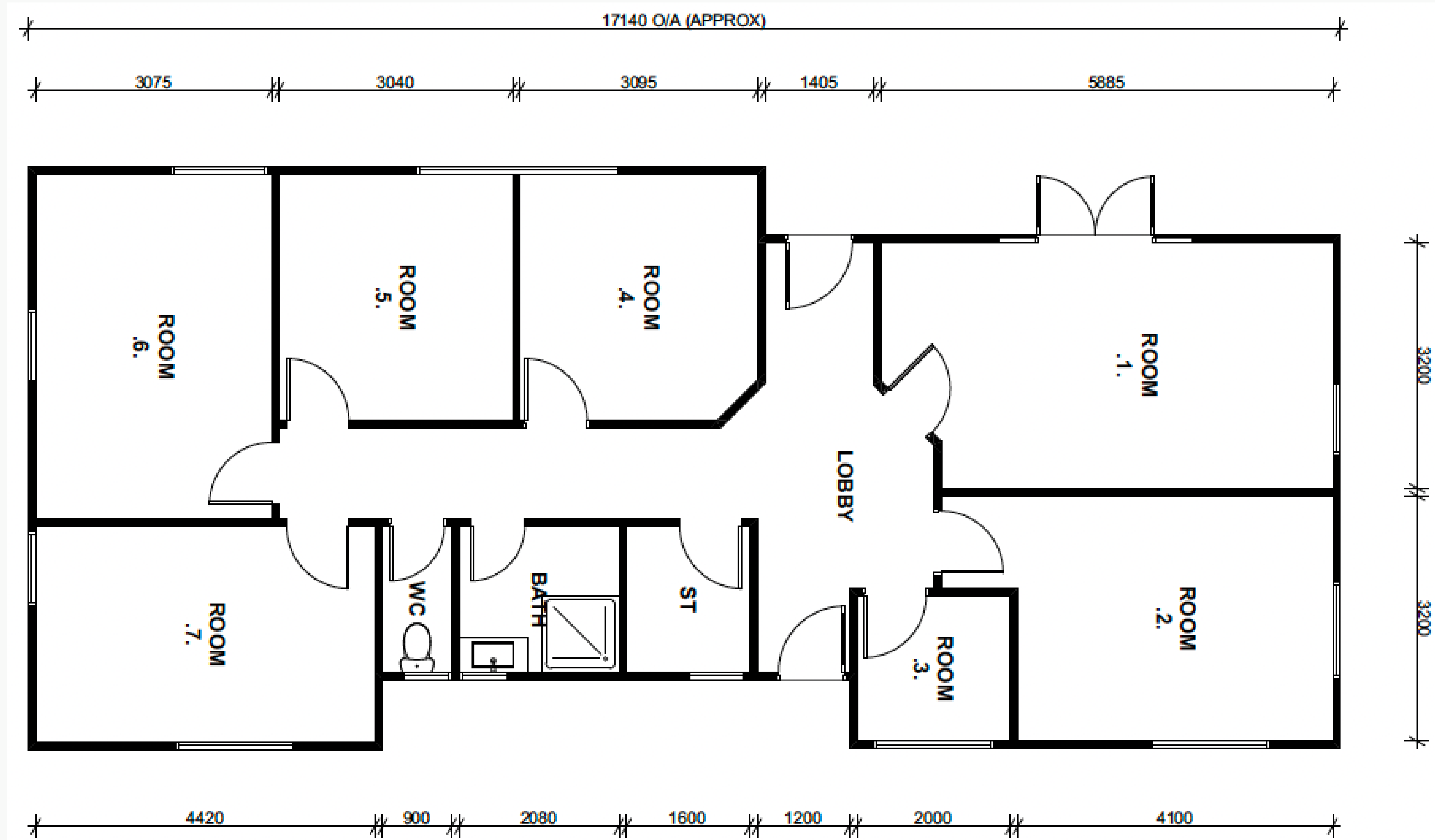


# Introducing "MORRISON"



**CRAIG WALKER**  
BUILDING REMOVALS LTD



DRAWING FOR MARKETING PURPOSE ONLY - NOT TO SCALE  
PLEASE REQUEST SCALE 1:100 @ A3 for PLANNING



**\$155,250.00 GST INC RESITED : Conditions Apply 7 BRM - 117.7 SQM**