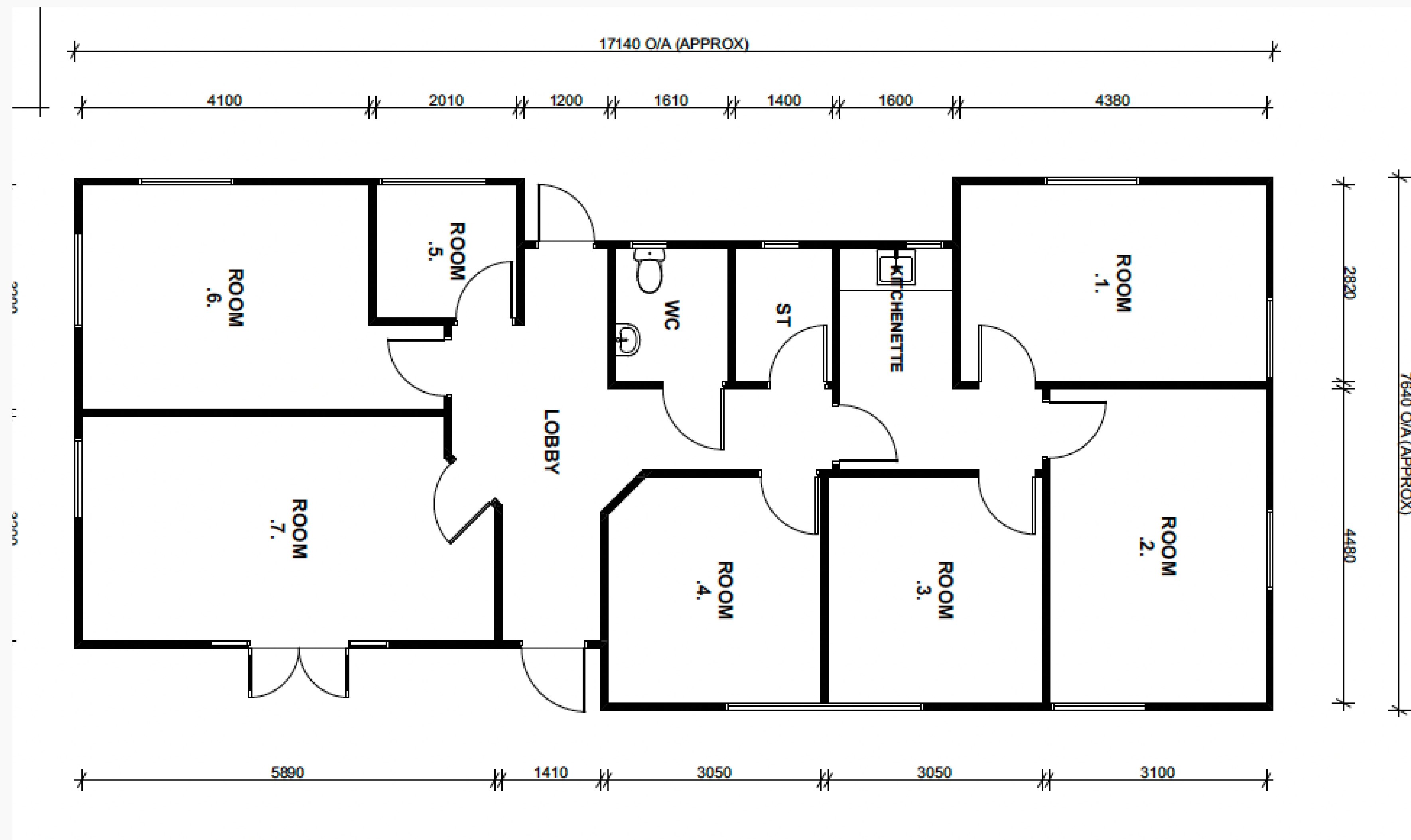


Introducing "PRESLEY"



CRAIG WALKER
BUILDING REMOVALS LTD



DRAWING FOR MARKETING PURPOSE ONLY - NOT TO SCALE
PLEASE REQUEST SCALE 1:100 @ A3 for PLANNING

\$155,250.00 GST INC RESITED : Conditions Apply

7 BRM - 117.7SQM