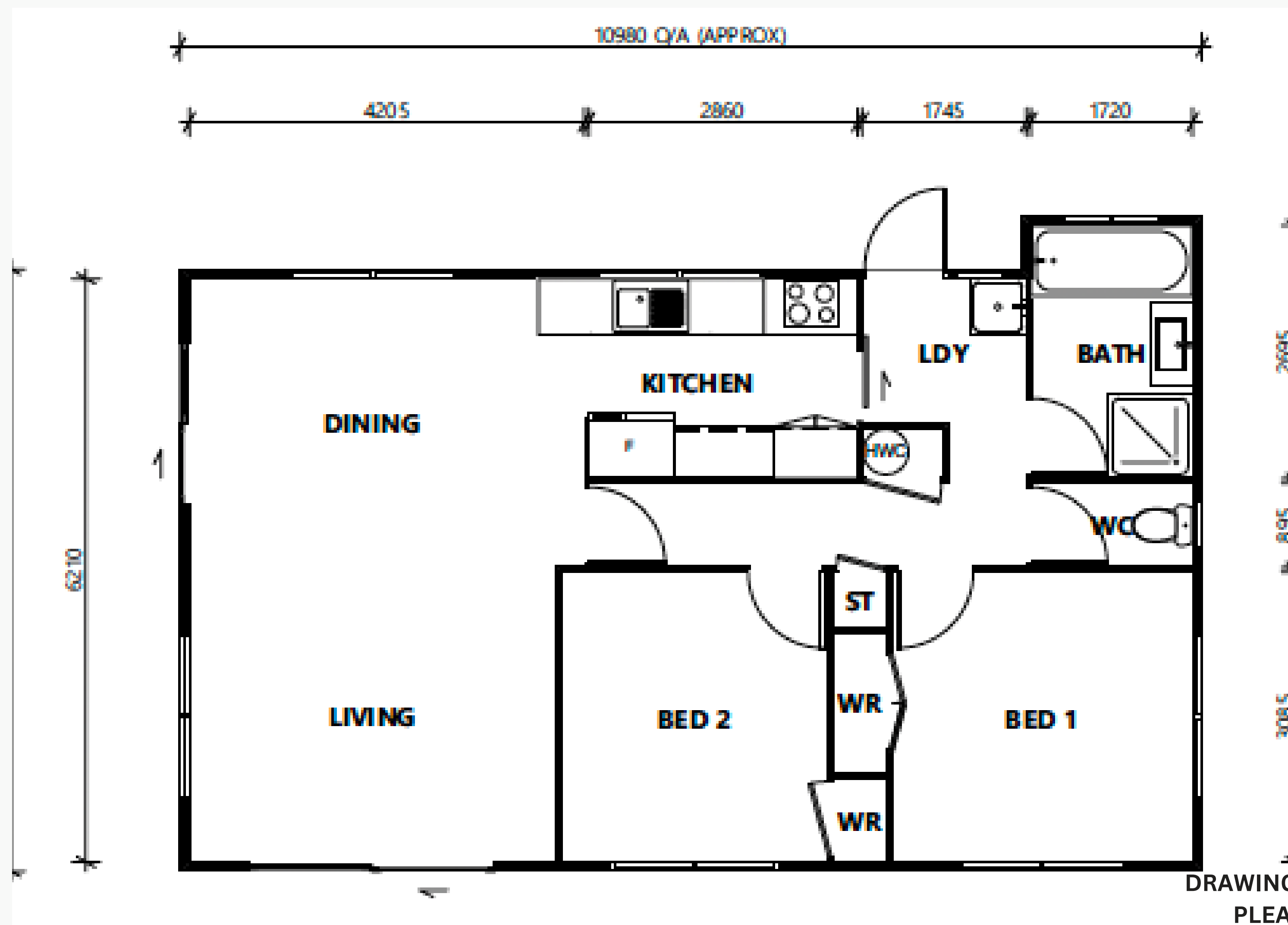


# Introducing "ELLIE"



**CRAIG WALKER**  
BUILDING REMOVALS LTD



DRAWING FOR MARKETING PURPOSE ONLY - NOT TO SCALE  
PLEASE REQUEST SCALE 1:100 @ A3 for PLANNING



**\$126,500.00 GST INC RESITED : Conditions Apply**

**2 BRM - 70.8 SQM**