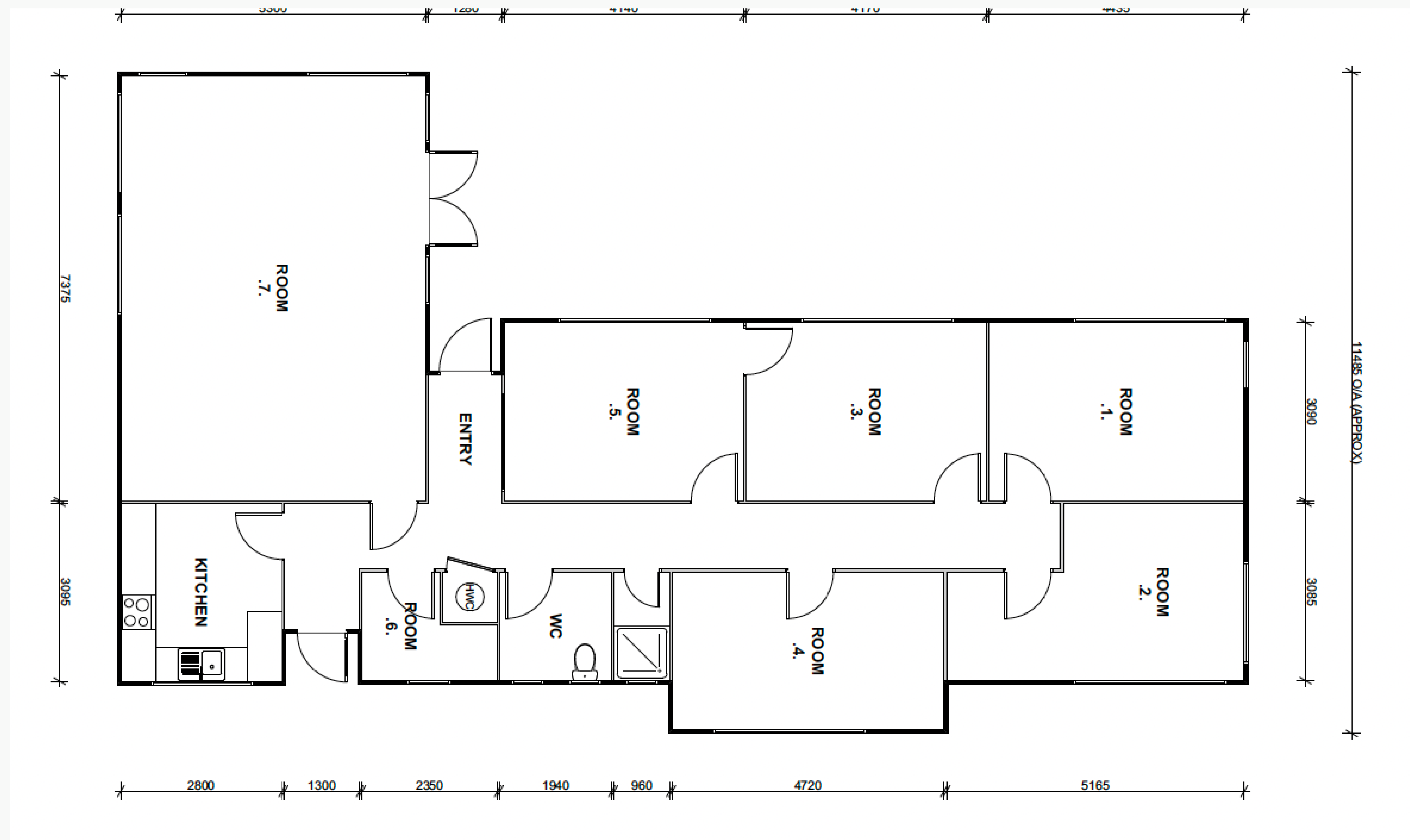


Introducing "JOPLIN"



CRAIG WALKER
BUILDING REMOVALS LTD



DRAWING FOR MARKETING PURPOSE ONLY - NOT TO SCALE
PLEASE REQUEST SCALE 1:100 @ A3 for PLANNING

\$166,750.00 GST INC RESITED : Conditions Apply 7 BRM - 149.8 SQM