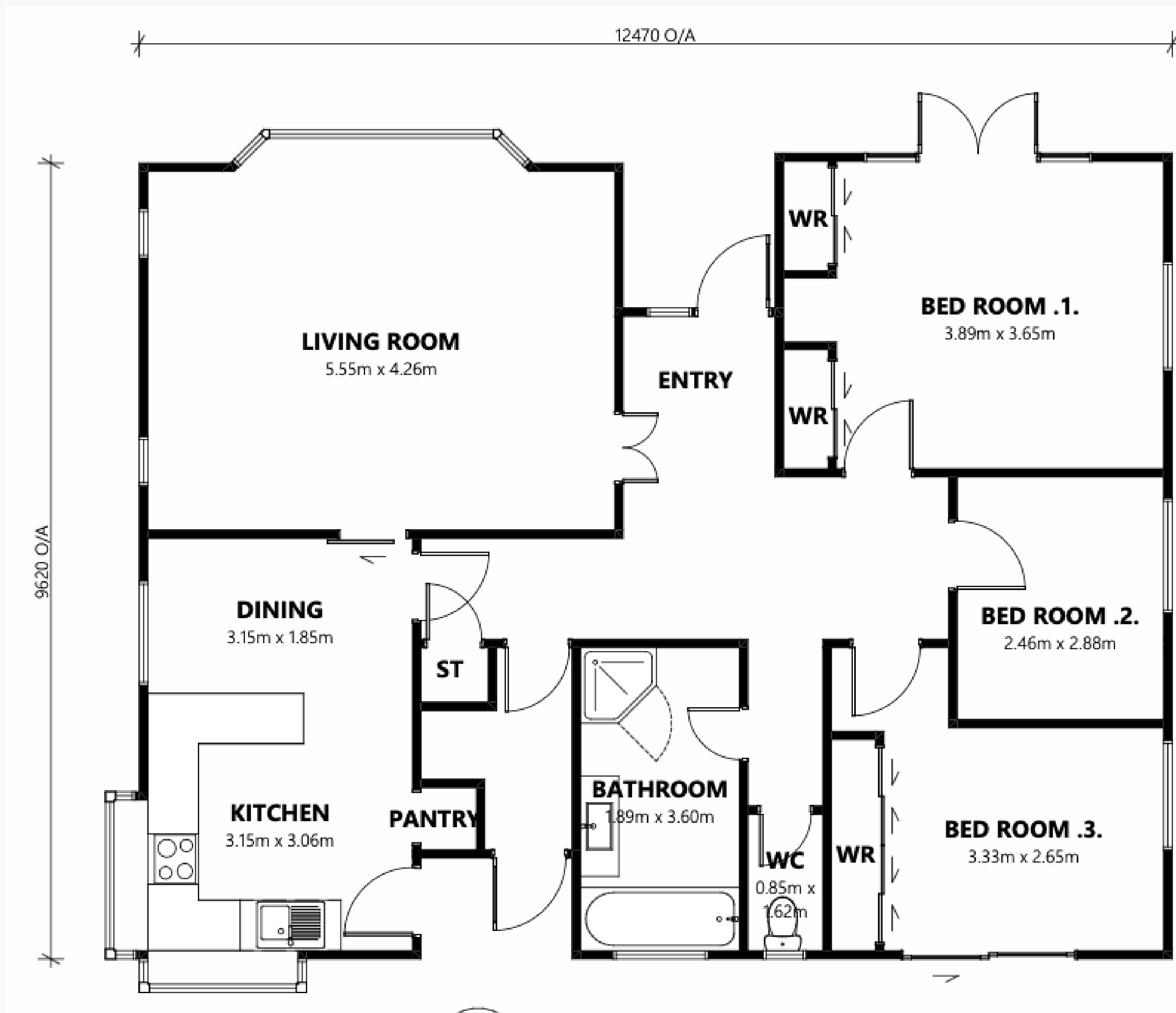


Introducing "DALLAS"



CRAIG WALKER
BUILDING REMOVALS LTD



DRAWING FOR MARKETING PURPOSE ONLY - NOT TO SCALE
PLEASE REQUEST SCALE 1:100 @ A3 for PLANNING

\$138,000.00 GST INC RESITED: Conditions Apply

3 BRM 113 SQM