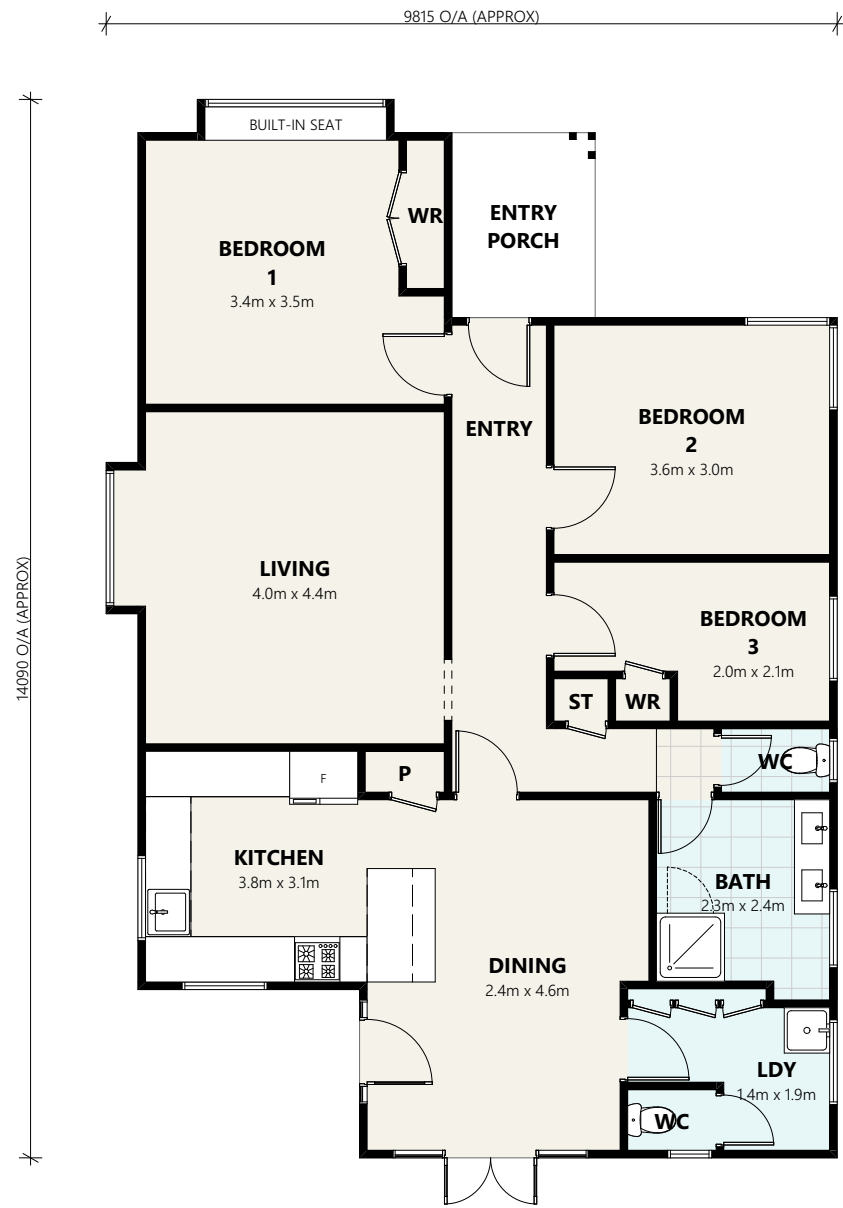


* DRAWING PRODUCED FOR CWBR MARKETING PURPOSES ONLY. ENSURE TO CONFIRM ALL MEASUREMENTS PRIOR TO USE *



CRAIG WALKER
BUILDING REMOVALS LTD

"MILLIE"

FLOOR AREA:
108.3 m²

STOCK #:
CW885

CONTRACT #:
23247

