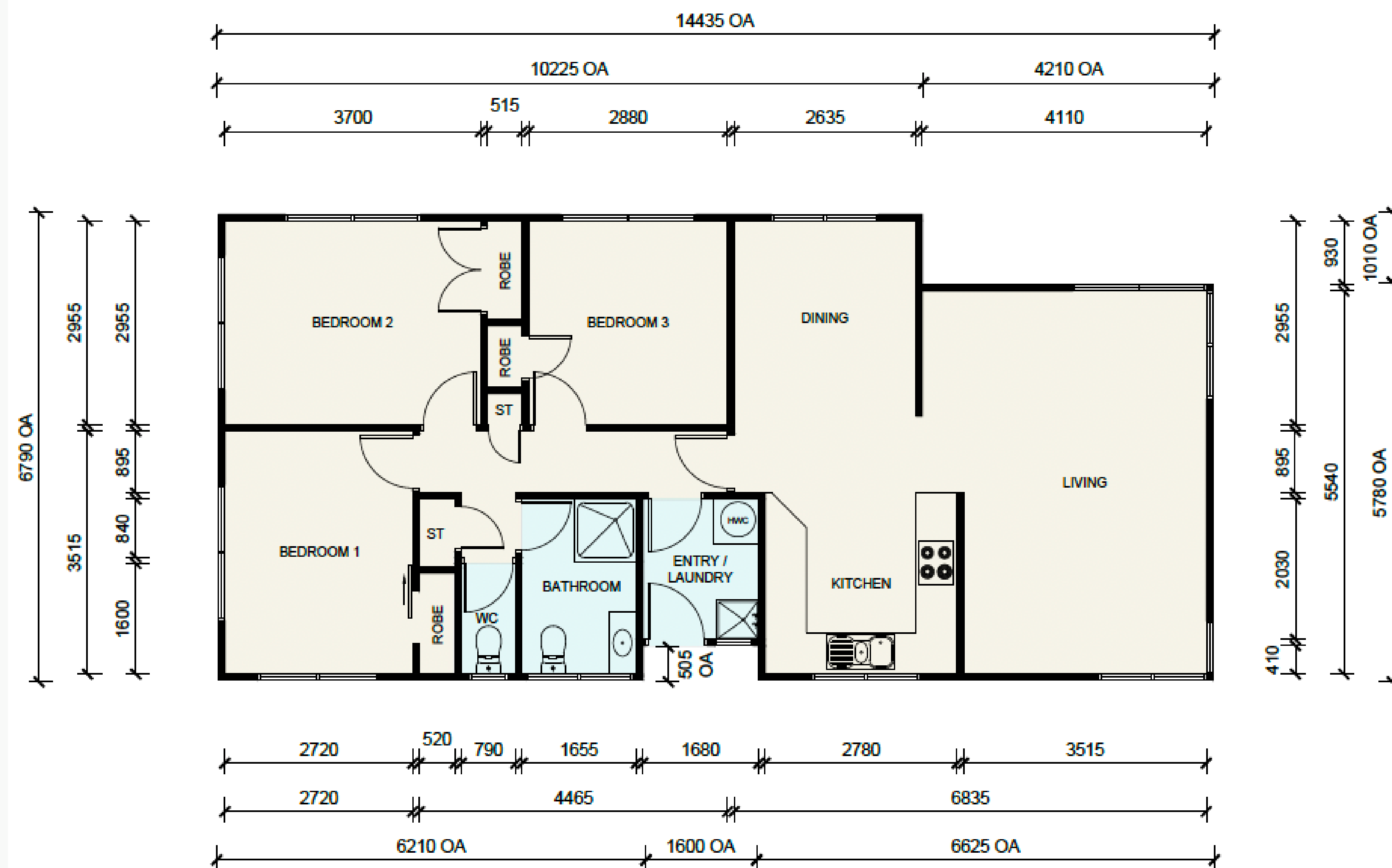


Introducing "CARRIE"



CRAIG WALKER
BUILDING REMOVALS LTD



DRAWING FOR MARKETING PURPOSE ONLY - NOT TO SCALE
PLEASE REQUEST SCALE 1:100 @ A3 for PLANNING

\$97,750.00 GST INC RESITED: Conditions Apply

3 BRM 91.8 SQM