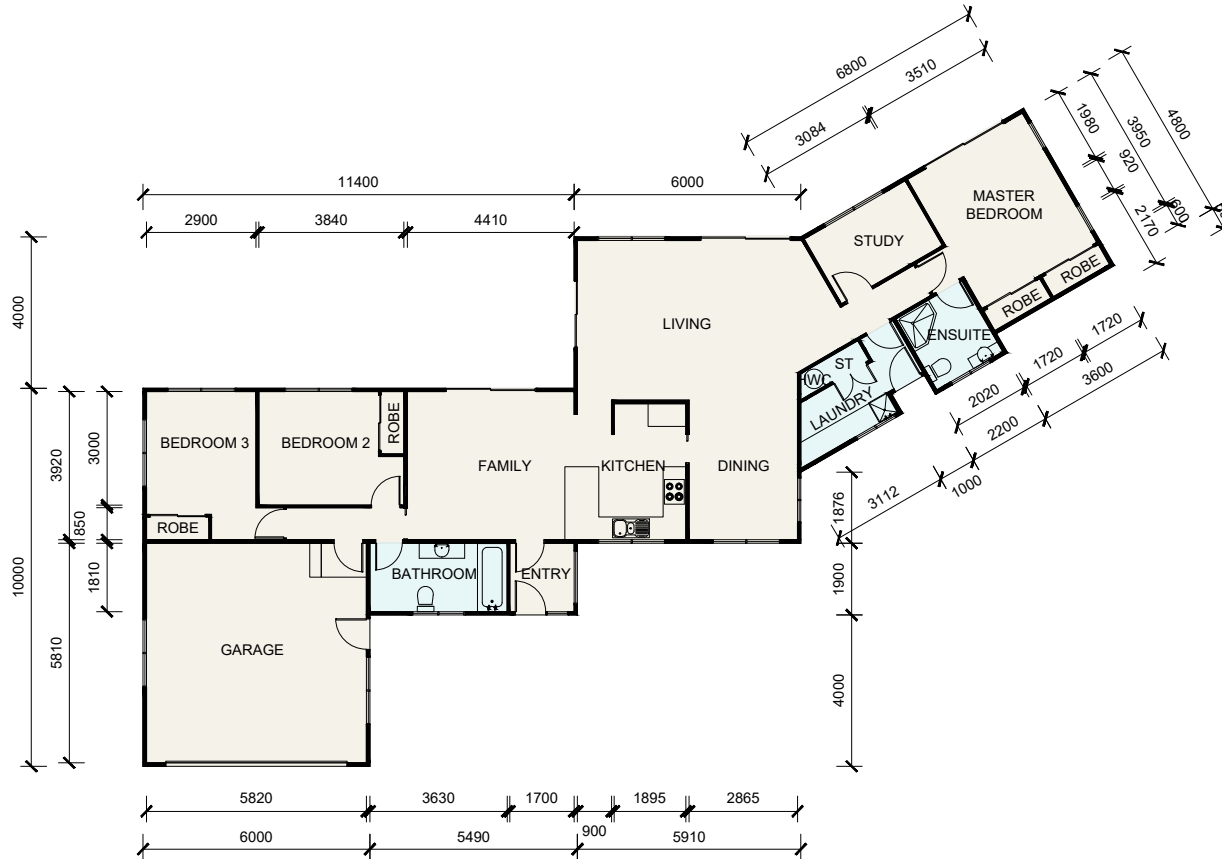


* DRAWING PRODUCED FOR CWBR MARKETING PURPOSES ONLY. ENSURE TO CONFIRM ALL MEASUREMENTS PRIOR TO USE *



CRAIG WALKER
BUILDING REMOVALS LTD

"CARTER"

FLOOR AREA:
185.5 m²

STOCK #:
CW896

CONTRACT #:
24035

