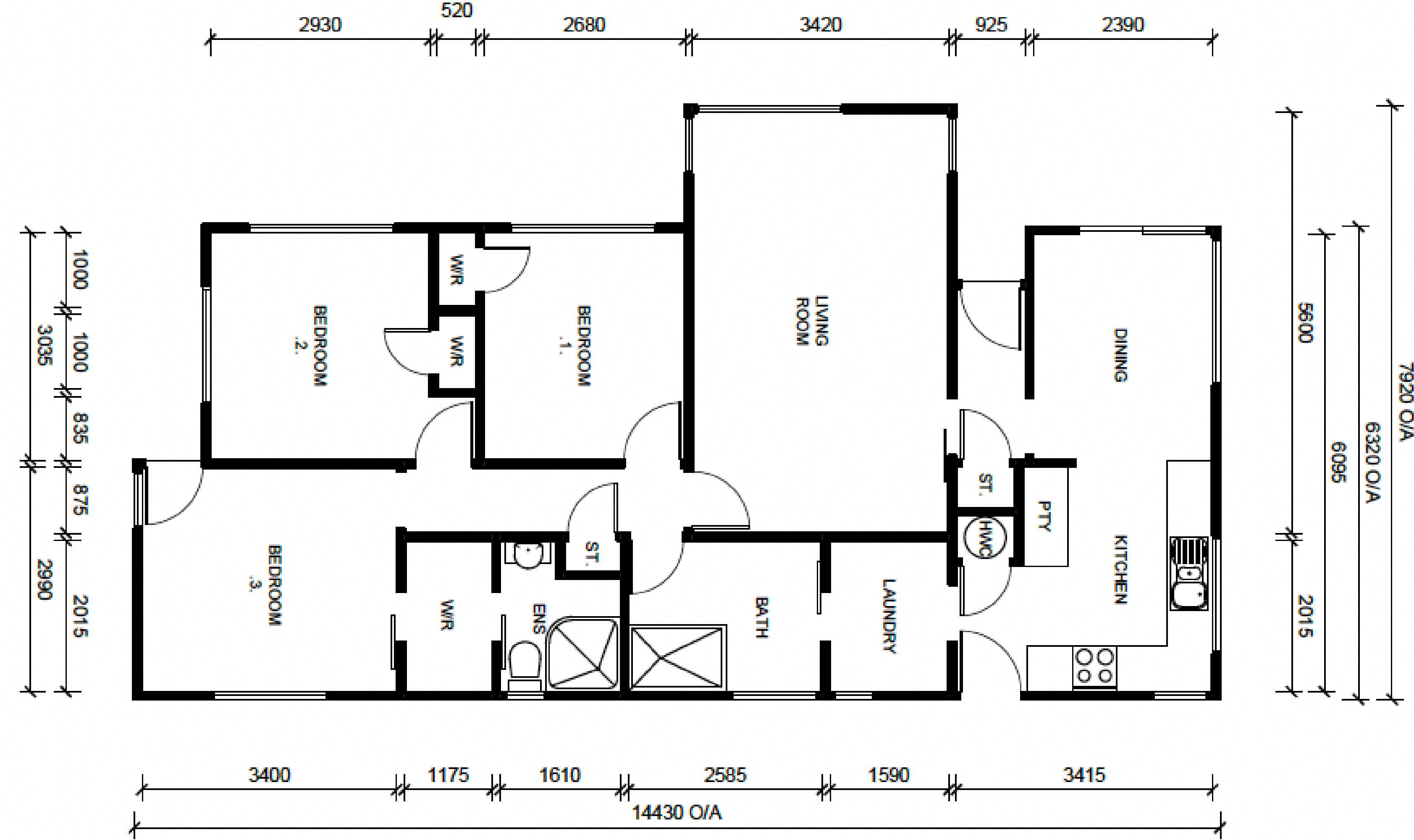


Introducing "MIA"



CRAIG WALKER
BUILDING REMOVALS LTD

DRAWING FOR MARKETING PURPOSE ONLY - NOT TO SCALE
PLEASE REQUEST SCALE 1:100 @ A3 for PLANNING



PRICE INCLUDES NEW EXTERIOR PAINT

\$94,300.00 GST INC RESITED : Conditions Apply

3 BRM - 93.7 SQM